

**Options**

1. Factory-arranged zones. When specified, linkage will group blades only as desired, finely adjusted for minimum linkage. Duct-cleats installed only where needed.
2. Insulated frame. Frame-ends and bottom (cold deck) covered with 1" insulation, retained by galvanized cover.
3. Drive-shafts and linkage at lower end of blade-shafts.
4. Special adaptor cleats to allow 1" insulation space between adjacent zone ducts.
5. Linkage and drive-extensions at both ends of shafts. This feature contributes to superior leakage performance. (See test data for details).

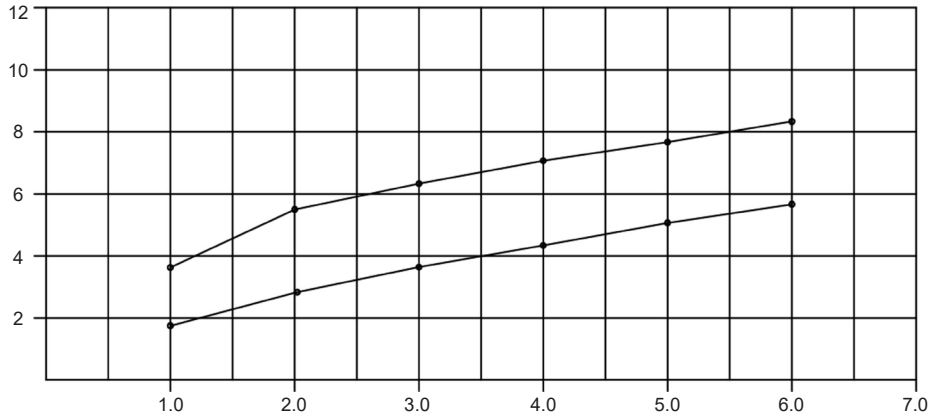
**Notes**

1. Standard finish is mill - galvanized.
2. Available blade sizes (Dim. G): 4" to 8".
3. To distribute blades into desired zone-sizes, cut to the 5/16" dia. linkage rod accordingly.

For handwritten orders, use the schedule block on page 2.

In the interest of product development, Cesco Products reserves the right to make changes without notice.

Air Leakage Performance



The above graph was produced from test results attained at an AMCA registered laboratory. Test was performed in accordance with AMCA Standard 500 and witnessed by a nationally-known engineering concern. Test unit size was 5' x 3' comprising three zones: one of 4-blades, one of 2-blades, and one single blade. A closing torque of 4 in.lbs./sq.ft. was applied. The two decks were tested independently and the graph above reflects the composite leakage.

|  |     |     |     |     |     |       |                    |      |                       |            |
|--|-----|-----|-----|-----|-----|-------|--------------------|------|-----------------------|------------|
|  |     |     |     |     |     |       |                    |      |                       |            |
|  |     |     |     |     |     |       |                    |      |                       |            |
|  |     |     |     |     |     |       |                    |      |                       |            |
|  |     |     |     |     |     |       |                    |      |                       |            |
| Item #   | Qty | "A" | "B" | "C" | "D" | "E"   | "F" X "G"<br>(= A) | "H"  | Options & Accessories | Union Made |
| <p style="text-align: center;">Damper Measurements</p> |     |     |     |     |     |       |                    |      |                       |            |
| Arch. / Eng.:  |     |     |     |     |     | EDR:  |                    | ECN: |                       | Job:       |
| Contractor:  |     |     |     |     |     |       |                    |      |                       |            |
| Project:   |     |     |     |     |     | Date: |                    | DWN: | DWG:                  |            |